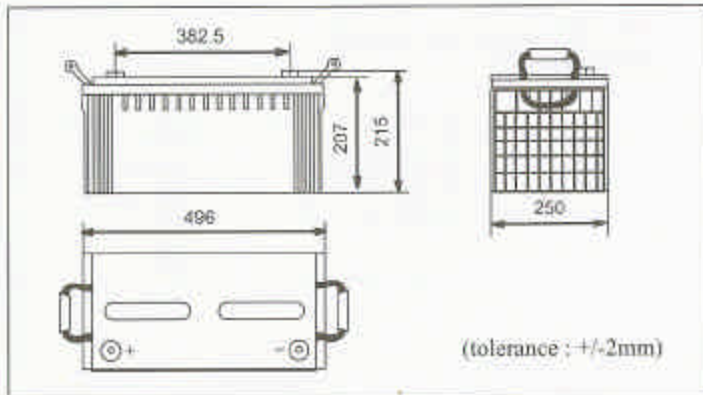


## 6GFM200A(12V200AH)

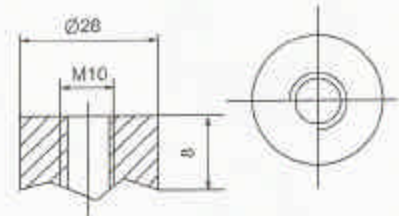
Major Application(s): Starting system etc.

### PHYSICAL SPECIFICATION

Nominal Voltage		12V
Nominal Capacity(10HR)		200AH
Dimension	Length	496±2mm (19.53inches)
	Width	250±2mm (9.84inches)
	Container Height	207±2mm (8.15inches)
	Total Height	215±2mm (8.46inches)
Weight		Approx 62 Kg (136.6 lbs)
Standard Terminal		B3(Bolt & nuts Terminal) Bolt Type : M10



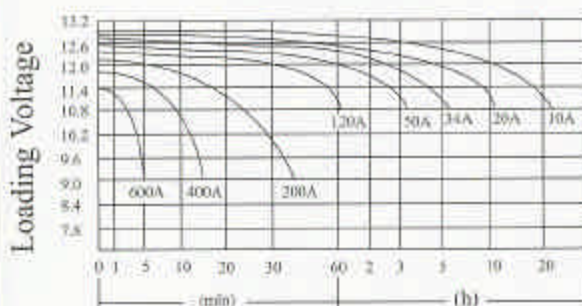
B3 ( Bolt-and-nut lead terminal)  
Bolt Type: M10



### ELECTRICAL SPECIFICATION

Capacity	20 hour rate(10A)	210Ah	It is recommended to use constant-voltage charge and recharge immediately after use		
	10 hour rate(20A)	200Ah			
Capacity affected by temperature	5 hour rate(34A)	170Ah			
	3 hour rate(50A)	150Ah			
	1hour rate(120A)	120Ah			
Internal Resistance	40 °C (104°F)	102%			
	25 °C (77°F)	100%			
	0 °C (32°F)	85%			
Fully charged battery(25 °C, 77°F)3mΩ			Constant-Voltage Charge	Cycle	Initial Charging Current less than50A Voltage 14.1V-14.4V at 25°C (77°F) Temperature Coefficient -18mV/°C
				Standby	No limit on Initial Charging Current Voltage 13.5V-13.8V at 25°C (77°F) Temperature Coefficient -18mV/°C

Discharge Characteristics(25°C, 77°F)



Discharge Current & Discharge Duration Time

